



Case Study

Migrating SAP S/4 HANA to AWS, Accelerating Cloud Transformation for USV in 3 Weeks

Client

Our client, USV, is a leading healthcare company. Their product offering includes Active Pharmaceutical Ingredients (APIs), Fixed Dosages Formulations (FDF), Peptides, Biosimilars, and Injectables. These are manufactured in their cGMP-compliant plants located in India. USV markets its products globally to more than 65 countries. USV FMCG business has global partnerships with brands like Sebamed.



Business Challenges

The client wanted to leverage the power of cloud to accelerate its digital transformation and migrating S/4 HANA to AWS was the first step towards giving their business the agility and flexibility they needed for this digital transformation. The client wanted an AWS Partner who specializes in the SAP Transformation and Migration Services on AWS to help migrate its non-productive S/4HANA environments. The company sought to improve the flexibility, scalability, and improved performance, while lowering the overall infrastructure cost. LTIMindtree along with AWS, stepped in to help them achieve SAP cloud transformation. There were many challenges involved such as stringent timelines - to move the S/4HANA workloads with three environments in a very short time. The workloads needed to be migrated to AWS during non-business hours, and to be made available for the users before the start of the business hours the next day, which included a version upgrade of operating system and HANA-silent installations.

“

The LTIMindtree SAP Cloud team hit top gear on day 1 and knew exactly what was needed to be done and met all deadlines with ease. The LAMPS automation used by LTIMindtree coupled with AWS services provided us a faster time to go-live and near zero migration issues. AWS India team supported actively.

Govind S Joshi, CIO, USV India

”

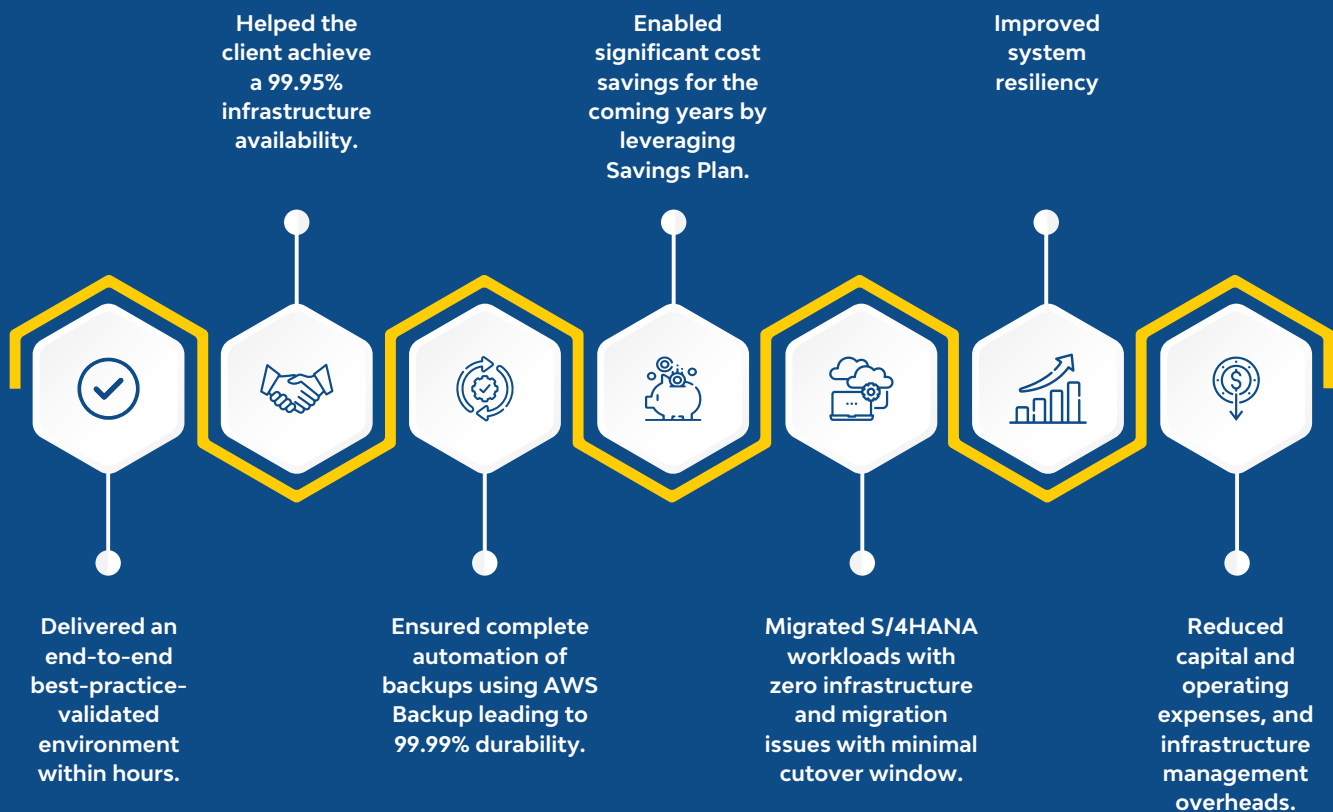


LTIMindtree Solution

To build new SAP environments, we used a solution called - Infinity LAMPS - which orchestrates manual deployment steps into an easy-to-execute automation runbook. The solution made it easier to migrate with one-click deployment by creating an AWS Landing Zone, along with pre-configured SLES instances, shell build with installation of S/4HANA 1709 and HANA DB 2.0, which reduced significant time taken to build the target infrastructure down from days to just four hours. LTIMindtree used the HANA backup/restore method for migrating S/4HANA workloads. LAMPS also helped to automate restoring of the HANA database at AWS without performing manual activities. LTIMindtree leveraged the following AWS services, technologies and features in our implementation: EC2, S3, EFS, AWS Backup, VPC, S2S VPN, CloudWatch, CloudTrail, Config, Systems Manager, Trusted Advisor, AWS Compute Optimizer, IAM, Secrets Manager, GuardDuty, Key Management Service, Certificate Manager, and CloudFormation. The entire migration of three environments was done in just three weeks' time including the client performing testing and validation of the environments.



Business Benefits





LTIMindtree is a global technology consulting and digital solutions company that enables enterprises across industries to reimagine business models, accelerate innovation, and maximize growth by harnessing digital technologies. As a digital transformation partner to more than 700 clients, LTIMindtree brings extensive domain and technology expertise to help drive superior competitive differentiation, customer experiences, and business outcomes in a converging world. Powered by 81,000+ talented and entrepreneurial professionals across more than 30 countries, LTIMindtree — a Larsen & Toubro Group company — combines the industry-acclaimed strengths of erstwhile Larsen and Toubro Infotech and Mindtree in solving the most complex business challenges and delivering transformation at scale. For more information, please visit <https://www.ltimindtree.com/>